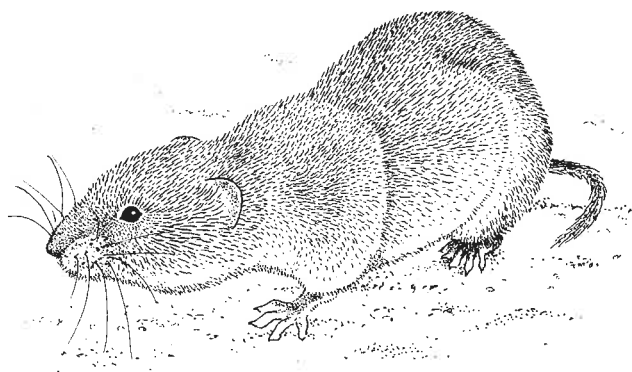


# *Microtus gerbei* (GERBE, 1879)



T. P. McOwat

This species is also known under the name *M. pyrenaicus* (de Selys-Longchamps, 1847), which is now considered as *nomen dubium*.

## Distribution

Endemic to the western Mediterranean area of Europe: Central and south-west France north to the Loire, the Pyrénées and the eastern Cantabrian Mountains.

## Geographic variation

Four subspecies, as described on the basis of colour and skull shape, are very weakly differentiated.

## Habitat

The Pyrenean pine vole is a fossorial species, inhabiting pastures and cultivated fields. In the Pyrénées, and other mountain regions, it is semi-fossorial, living in grasslands and along rocky woodland borders. Preferred regions have less than 1000 mm rainfall and average annual temperatures below 15–16°C. It is found at altitudes up to 2000 m in the Pyrénées.

## Population status

Densities in central France locally up to 100 ind./ha; despite this, the species is not considered to be an agricultural pest.

## Pyrenean pine vole

AL	-	LU	-
BG	-	LV	-
CZ	Hrabošík pyrenejský	MK	-
DE	Pyrenäen-Kleinwühlmaus	MT	-
DK	-	NL	Pyreneese woelmuis
EE	-	NO	-
ES	Topillo de Gerbe	PL	Darniówka pirenejska
FI	Pyreneidentunnelimyyrä	PT	-
FO	-	RO	-
FR	Campagnol des Pyrénées	RU	-
GR	-	SE	-
HR	Pirenejski voluharić	SI	Pirenejska kratkouha voluharica
HU	Pireneusi pocok	SK	-
IR	-	TR	-
IS	-	YU	-
IT	Arvicola dei Pirenei		
LT	-		

## International legal & conservation status

None.

## Literature

Gosálbez (1987)

Krapp (1982c) – review (as *M. pyrenaicus*)

L. J. Palomo

