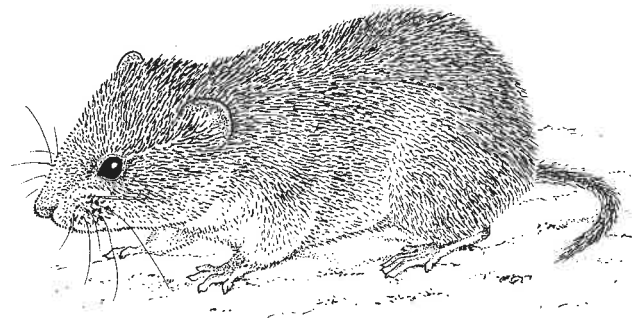


Microtus cabreræ THOMAS, 1906



T. P. McOwat

Cabrera's vole

| | | | |
|----|----------------------|----|-----------------------|
| AL | - | LT | - |
| BG | Испанска полевка | LU | - |
| CZ | Hraboš Cabrerův | LV | - |
| DE | Cabreramaus | MK | - |
| DK | - | MT | - |
| EE | - | NL | Cabrera woelmuis |
| ES | Topillo ibérico | NO | Spaniamarkmus |
| FI | Espanjanmyyrä | PL | Nornik Cabrery |
| FO | - | PT | Rato de Cabrera |
| FR | Campagnol de Cabrera | RO | - |
| GR | - | RU | Полевка Кабрера |
| HR | Kabrerina voluharica | SE | Västlig medelhavssork |
| HU | Cabrera-pocok | SI | Španska voluharica |
| IR | - | SK | - |
| IS | - | TR | - |
| IT | Arvicola di Cabrera | YU | - |

Distribution

Endemic to the Iberian Peninsula. Although records are widely scattered across the peninsula, the actual distribution area is fragmented.

Geographic variation

Two subspecies are usually recognized: *M. cabreræ cabreræ* and *M. c. dentatus* Miller, 1910. Morphological differences between them are negligible, however, which makes their validity questionable.

Habitat

Pastures and fields close to surface water. Humid slopes and foothills with a Mediterranean climate at altitudes between 500 to 1000 m are preferred habitats, while regions with high summer temperatures are avoided. Summer activity is mainly restricted to underground galleries.

Population status

Small colonies are subject to strong annual fluctuations. Because of the fragmented distribution, populations are small and isolated. Farming practices during recent decades have presumably reduced its range and accelerated the fragmentation. Distribution area decreased since the Pleistocene, with subfossil (Holocene) records outside the actual range.

International legal & conservation status

Bern Convention, Appendix II.

EU Habitats & Species Directive, Annex II & Annex IV.
IUCN Red List, Lower Risk – near threatened.

Literature

Ayarzagüena & López-Martínez (1976)
Niethammer (1982e) – review
Ventura *et al* (1998)

L. J. Palomo

